

Combitherm® CTP6-10G

Gas Boiler-free

Combining multiple cooking functions into a single appliance, Combitherm® ovens provide endless versatility, reliability and unmatched performance. An all-in-one solution for efficient and consistent food production. Combitherm ovens do the work of a convection oven, kettle, steamer, fryer, smoker and more. Execute every dish, no matter how simple or complex, faster than ever with flawless precision and consistency.



CTP6-10G

Standard features

- Four cooking modes—steam, convection, combination, and retherm
- Programmable, touchscreen control
- Easy recipe upload/download via USB port
- Four fully automated cleaning cycles
- Front-accessible and retractable rinse hose
- LED illuminated door handle is designed for the needs of the busy kitchen, and provides visual notification of the oven status
- Absolute Humidity Control™ allows for selection any humidity level from 0-100% to maximize food quality, texture, and yield
- SafeVent™ provides automatic steam venting at the end of the cooking cycle



- 7** Seven full-size or GN 1/1 pans; seven half-size sheet pans, one row deep
- 2** Two side racks with seven non-tilt support rails; 11-3/4" [298mm] horizontal width between rails, 2-3/4" [70mm] vertical spacing between rails
- 72 lb [33 kg] product maximum
- 45 quarts [57 liters] volume maximum
- Three [3] shelves included. Additional wire shelves required for maximum capacity.

Архангельск (8182)63-90-72
 Астана (7172)727-132
 Астрахань (8512)99-46-04
 Барнаул (3852)73-04-60
 Белгород (4722)40-23-64
 Брянск (4832)59-03-52
 Владивосток (423)249-28-31
 Волгоград (844)278-03-48
 Вологда (8172)26-41-59
 Воронеж (473)204-51-73
 Екатеринбург (343)384-55-89
 Иваново (4932)77-34-06

Ижевск (3412)26-03-58
 Иркутск (395)279-98-46
 Казань (843)206-01-48
 Калининград (4012)72-03-81
 Калуга (4842)92-23-67
 Кемерово (3842)65-04-62
 Киров (8332)68-02-04
 Краснодар (861)203-40-90
 Красноярск (391)204-63-61
 Курск (4712)77-13-04
 Липецк (4742)52-20-81
 Киргизия (996)312-96-26-47

Магнитогорск (3519)55-03-13
 Москва (495)268-04-70
 Мурманск (8152)59-64-93
 Набережные Челны (8552)20-53-41
 Нижний Новгород (831)429-08-12
 Новокузнецк (3843)20-46-81
 Новосибирск (383)227-86-73
 Омск (3812)21-46-40
 Орел (4862)44-53-42
 Оренбург (3532)37-68-04
 Пенза (8412)22-31-16
 Казахстан (772)734-952-31

Пермь (342)205-81-47
 Ростов-на-Дону (863)308-18-15
 Рязань (4912)46-61-64
 Самара (846)206-03-16
 Санкт-Петербург (812)309-46-40
 Саратов (845)249-38-78
 Севастополь (8692)22-31-93
 Симферополь (3652)67-13-56
 Смоленск (4812)29-41-54
 Сочи (862)225-72-31
 Ставрополь (8652)20-65-13
 Таджикистан (992)427-82-92-69

Сургут (3462)77-98-35
 Тверь (4822)63-31-35
 Томск (3822)98-41-53
 Тула (4872)74-02-29
 Тюмень (3452)66-21-18
 Ульяновск (8422)24-23-59
 Уфа (347)229-48-12
 Хабаровск (4212)92-98-04
 Челябинск (351)202-03-61
 Череповец (8202)49-02-64
 Ярославль (4852)69-52-93

Configurations (select one)

Door swing

- Right hinged
- Recessed door, optional; increases oven width by 5" [127mm]

Electrical

- 120V 1ph
- 208-240V 1ph
- 208-240V 3ph
- 380-415V 3ph

Gas type

- Natural
- Propane

Accessories (select all that apply)

- CombiLatch™
- Stacking hardware
- Seismic feet package, optional
- Smoking feature, including one-step cold smoking [not available on units with security devices]
- Extended one-year warranty
- Automatic grease collection system, includes four 6-piece, self-trussing poultry racks #5014438, interior drip collection pan, and grease collection container with shut off valve

Cleaning

- Automatic tablet-based cleaning system, standard
- Automatic liquid cleaning system, optional

Probe choices

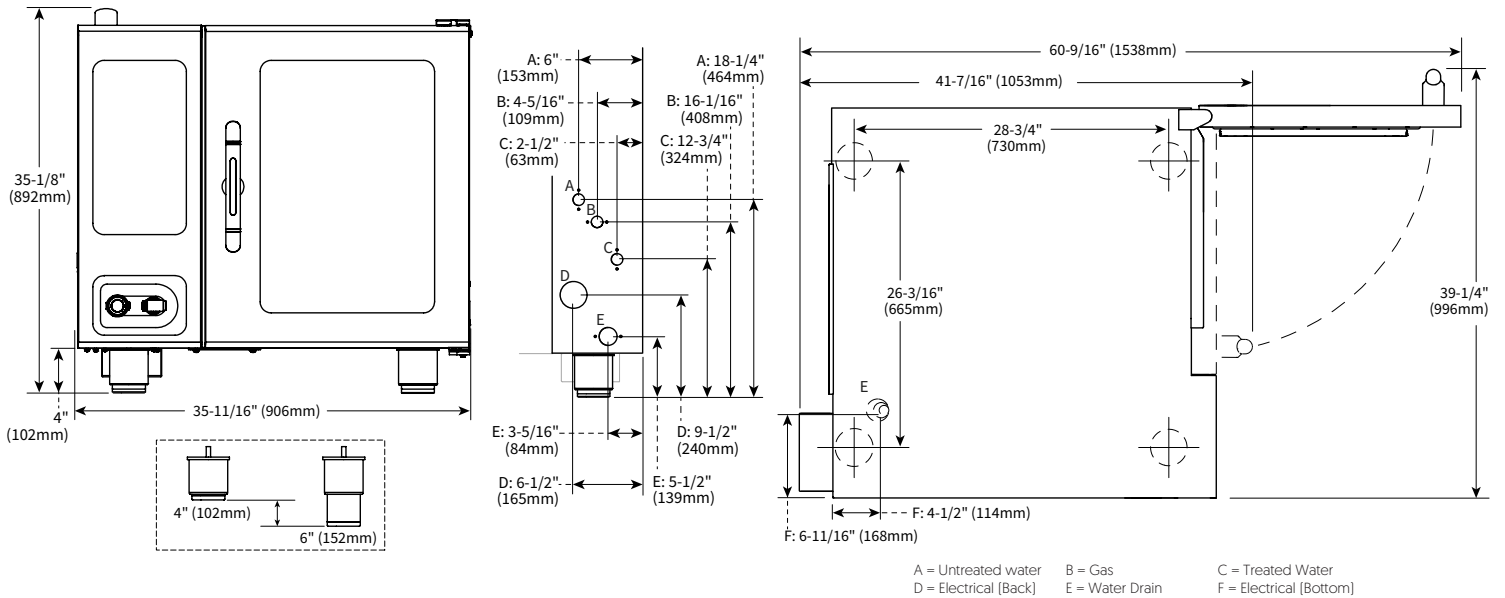
- Removable, single-point, quick-connect core temperature probe, standard
- Removable, single-point, quick-connect sous vide temperature probe, optional
- Hard-wired, multi-point core temperature probe, optional [factory only installed]

Security devices for correctional facility use

- Optional base package [not available with recessed door]: includes tamper-proof screw package, excludes temperature probe
- Anti-entrapment device, optional
- Control panel security cover, optional
- Hasp door lock [padlock not included], optional
- Removable, single-point, quick-connect core temperature probe, optional

Combitherm® CTP6-10G

Specification



DIMENSIONS

Model
CTP6-10G

Exterior (H x W x D)
35-1/8" x 35-11/16" x 41-7/16" [892mm x 906mm x 1053mm]
Exterior with recessed door (H x W x D)
35-1/8" x 40-11/16" x 41-7/16" [892mm x 1033mm x 1053mm]

Interior (H x W x D)
20-1/2" x 16-1/4" x 28-1/16" [520mm x 411mm x 712mm]
Net Weight
524 lb [238 kg]

Ship Dimensions (L x W x H)*
CTP6-10G 56" x 45" x 51" [1422mm x 1143mm x 1295mm]

Ship Weight*
590 lb [268 kg]

*Domestic ground shipping information. Contact factory for export weight and dimensions.



CLEARANCE

Top: 20" [508mm]
Left: 0" [0mm]
 18" [457mm] recommended service access
Right: 0" [0mm] Non-combustible surfaces
 2" [51mm] combustible surfaces
Bottom: 5-1/8" [130mm]
Back: 4" [102mm]
 4-5/16" [109mm] optional plumbing kit



CHECK FIRST

- Oven must be installed level.
- Water supply shut-off valve and back-flow preventer when required by local code.
- Hood installation is required.
- Drain must not be located directly underneath the appliance.

Combitherm® CTP6-10G



Heat of rejection

CTP6-10G	Heat Gain qs, BTU/hr	Heat Gain qs, kW	Heat Gain qs, Mj/hr
	269	0.08	33.8



Noise emissions

A maximum 67 dBA was measured at 3.3 ft [1 m] from unit as tested on CTP10-20E.



CTP6-10G	V	Ph	Hz	Awg (mm ²)	ProPower™ Standard			With CombiSmoker® Option			Connection	Certification
					A	Breaker	kW	A	Breaker	kW		
† 120V**	120	1	60	12 [3.31]	6.8	20	.84	12.0	20	1.5	L1, L2/N, G	
† 208-240V	208	1*	50/60	14 [2.08]	4.8	15	1.0	7.3	15	1.5	L1, L2/N, G	
	240	1*	50/60	14 [2.08]	4.2	15	1.0	7.1	15	1.7	L1, L2/N, G	
† 208-240V	208	3	50/60	14 [2.08]	4.8	15	1.0	7.3	15	1.5	L1, L2, L3, G	
	240	3	50/60	14 [2.08]	4.2	15	1.0	7.1	15	1.7	L1, L2, L3, G	
380-415V	380	3	50/60	14 [2.08]	4.6	15	1.0	7.2	15	1.6	L1, L2, L3, N, G	
	415	3	50/60	14 [2.08]	4.2	15	1.0	7.1	15	1.7	L1, L2, L3, N, G	

† Per UL requirements, must be permanently connected to electrical supply source

* Electrical service charge applies

** Ground fault or residual current protection device must accommodate a leakage current of 20mA.

- Electrical connections must meet all applicable federal, state, and local codes.
- For use on individual branch circuit only.
- Ovens are not supplied with an electrical cord or plug.



Water requirements (per oven)

- Two cold water inlets - drinking quality
- One treated water inlet: 3/4" NPT connection. Line pressure 30 psi minimum dynamic and 90 psi maximum static [200-600 kPa] at a minimum flow rate of 0.26 gpm [1 L/min].
- One untreated water inlet: 3/4" NPT connection. Line pressure 30 psi minimum dynamic and 90 psi maximum static [200-600 kPa] at a minimum flow rate of 2.64 gpm [10 L/min]. Water drain: 1-1/2" [40mm] connection with a vertical vent to extend above the exhaust vent. Materials must withstand temperatures up to 200°F [93°C].

Water Quality Standards

It is the sole responsibility of the owner/operator/purchaser of this equipment to verify that the incoming water supply is comprehensively tested and, if required, a means of "water treatment" provided that would meet compliance requirements with the published water quality standards shown below. Non-compliance with these minimum standards will potentially damage this equipment and/or components and void the original equipment manufacturer's warranty. Alto-Shaam recommends using the Alto-Shaam Reverse Osmosis System to properly treat your water.

Inlet Water Requirements		
Contaminant	Treated Water	Untreated Water
Free Chlorine	Less than 0.1 ppm (mg/L)	Less than 0.1 ppm (mg/L)
Hardness	30-70 ppm	30-70 ppm
Chloride	Less than 30 ppm (mg/L)	Less than 30 ppm (mg/L)
pH	7.0 to 8.5	7.0 to 8.5
Silica	Less than 12 ppm (mg/L)	Less than 12 ppm (mg/L)
Total Dissolved Solids (tds)	50-125 ppm	50-360 ppm



Clearance requirements for water filtration system

Do not install a water filtration system behind unit.

Combitherm® CTP6-10G



Gas Requirements (gas type must be specified on order)
Hook-up: 3/4" NPT

UL Marked Appliances	Maximum Input BTU/h	Minimum Input BTU/h	Maximum Inlet Pressure Inches WC	Minimum Inlet Pressure Inches WC	Maximum Fuel Consumption*	
					CFH	GPH
Natural Gas	48,000	32,000	14.0	5.5	45.7	N/A
Propane				9.0	19.2	0.5

*Assumes an average heating value for natural gas to be 1050 BTU/SCF and a specific gravity of 0.60. The assumed value for propane gas is 2,500 BTU/SCF, and a specific gravity of 1.53.

AGA Marked Appliances	Maximum Input MJ/h	Minimum Input MJ/h	Maximum Inlet Pressure kPa	Minimum Inlet Pressure kPa	Maximum Fuel Consumption	
					m³/h	L/h
Natural Gas	50.6	33.8	3.48	1.13	1.3	N/A
Propane				2.75	0.5	2.0

CE Marked Appliances	Maximum Input		Minimum Input		Nominal Gas Pressure mbar	Maximum Gas Pressure mbar	Maximum Fuel Consumption m³
	kWh (Hs)	kWh (Hi)	kWh (Hs)	kWh (Hi)			
2E [G20]	14.1	12.7	12.5	11.3	20	50	1.3
2LL [G25]					20		1.6
3P [G31]	13.8	12.7	12.2	11.3	37		0.5
3B/P [G30]					29		0.5

Архангельск (8182)63-90-72
Астана (7172)727-132
Астрахань (8512)99-46-04
Барнаул (3852)73-04-60
Белгород (4722)40-23-64
Брянск (4832)59-03-52
Владивосток (423)249-28-31
Волгоград (844)278-03-48
Вологда (8172)26-41-59
Воронеж (473)204-51-73
Екатеринбург (343)384-55-89
Иваново (4932)77-34-06

Ижевск (3412)26-03-58
Иркутск (395)279-98-46
Казань (843)206-01-48
Калининград (4012)72-03-81
Калуга (4842)92-23-67
Кемерово (3842)65-04-62
Киров (8332)68-02-04
Краснодар (861)203-40-90
Красноярск (391)204-63-61
Курск (4712)77-13-04
Липецк (4742)52-20-81
Киргизия (996)312-96-26-47

Магнитогорск (3519)55-03-13
Москва (495)268-04-70
Мурманск (8152)59-64-93
Набережные Челны (8552)20-53-41
Нижний Новгород (831)429-08-12
Новокузнецк (3843)20-46-81
Новосибирск (383)227-86-73
Омск (3812)21-46-40
Орел (4862)44-53-42
Оренбург (3532)37-68-04
Пенза (8412)22-31-16
Казахстан (772)734-952-31

Пермь (342)205-81-47
Ростов-на-Дону (863)308-18-15
Рязань (4912)46-61-64
Самара (846)206-03-16
Санкт-Петербург (812)309-46-40
Саратов (845)249-38-78
Севастополь (8692)22-31-93
Симферополь (3652)67-13-56
Смоленск (4812)29-41-54
Сочи (862)225-72-31
Ставрополь (8652)20-65-13
Таджикистан (992)427-82-92-69

Сургут (3462)77-98-35
Тверь (4822)63-31-35
Томск (3822)98-41-53
Тула (4872)74-02-29
Тюмень (3452)66-21-18
Ульяновск (8422)24-23-59
Уфа (347)229-48-12
Хабаровск (4212)92-98-04
Челябинск (351)202-03-61
Череповец (8202)49-02-64
Ярославль (4852)69-52-93

<https://altoshaam.nt-rt.ru/> || ama@nt-rt.ru