

# Combitherm® CTC7-20G

## Gas Boiler-free

Combining multiple cooking functions into a single appliance, Combitherm® ovens provide endless versatility, reliability and unmatched performance. An all-in-one solution for efficient and consistent food production. Combitherm ovens do the work of a convection oven, kettle, steamer, fryer, smoker and more. Execute every dish, no matter how simple or complex, faster than ever with flawless precision and consistency.



CTC7-20G

### Standard features

- Simple and intuitive push button control that commands all oven functions with easily identifiable icons
- LED display indicating cooking mode, temperature settings, time remaining, and various instructions
- LED illuminated door handle designed for the needs of the busy kitchen, and provides visual notification of the oven status
- CoolTouch3™ triple panel glass door keeps the heat inside, while keeping the glass cool to the touch and providing 15% greater thermal retention to improve performance and efficiency
- Three cooking modes—steam, convection, and combination
- Front-accessible and retractable rinse hose
- Two different fan speeds
- One fully automated cleaning cycle



- 8** Eight, full-size sheet pans or eight GN 2/1 pans; sixteen full-size or GN 1/1 pans, two rows deep
- 2** Two side racks with eight non-tilt support rails; 19-7/8" [505mm] horizontal width between rails, 2-3/4" [70mm] vertical spacing between rails
- 168 lb [76 kg] product maximum
- 105 quarts [133 liters] volume maximum
- Four [4] wire shelves included. Additional wire shelves required for maximum capacity.

Архангельск (8182)63-90-72  
 Астана (7172)727-132  
 Астрахань (8512)99-46-04  
 Барнаул (3852)73-04-60  
 Белгород (4722)40-23-64  
 Брянск (4832)59-03-52  
 Владивосток (423)249-28-31  
 Волгоград (844)278-03-48  
 Вологда (8172)26-41-59  
 Воронеж (473)204-51-73  
 Екатеринбург (343)384-55-89  
 Иваново (4932)77-34-06

Ижевск (3412)26-03-58  
 Иркутск (395)279-98-46  
 Казань (843)206-01-48  
 Калининград (4012)72-03-81  
 Калуга (4842)92-23-67  
 Кемерово (3842)65-04-62  
 Киров (8332)68-02-04  
 Краснодар (861)203-40-90  
 Красноярск (391)204-63-61  
 Курск (4712)77-13-04  
 Липецк (4742)52-20-81  
 Киргизия (996)312-96-26-47

Магнитогорск (3519)55-03-13  
 Москва (495)268-04-70  
 Мурманск (8152)59-64-93  
 Набережные Челны (8552)20-53-41  
 Нижний Новгород (831)429-08-12  
 Новокузнецк (3843)20-46-81  
 Новосибирск (383)227-86-73  
 Омск (3812)21-46-40  
 Орел (4862)44-53-42  
 Оренбург (3532)37-68-04  
 Пенза (8412)22-31-16  
 Казахстан (772)734-952-31

Пермь (342)205-81-47  
 Ростов-на-Дону (863)308-18-15  
 Рязань (4912)46-61-64  
 Самара (846)206-03-16  
 Санкт-Петербург (812)309-46-40  
 Саратов (845)249-38-78  
 Севастополь (8692)22-31-93  
 Симферополь (3652)67-13-56  
 Смоленск (4812)29-41-54  
 Сочи (862)225-72-31  
 Ставрополь (8652)20-65-13  
 Таджикистан (992)427-82-92-69

Сургут (3462)77-98-35  
 Тверь (4822)63-31-35  
 Томск (3822)98-41-53  
 Тула (4872)74-02-29  
 Тюмень (3452)66-21-18  
 Ульяновск (8422)24-23-59  
 Уфа (347)229-48-12  
 Хабаровск (4212)92-98-04  
 Челябинск (351)202-03-61  
 Череповец (8202)49-02-64  
 Ярославль (4852)69-52-93

### Configurations (select one)

#### Door swing

- Right hinged
- Recessed door, optional; increases oven width by 5" [127mm]

#### Electrical

- 120V 1ph  208-240V 3ph
- 380-415V 3ph

#### Gas type

- Natural  Propane

### Accessories (select all that apply)

- CombiLatch™
- Stacking hardware
- Seismic feet package, optional
- Extended one-year warranty

### Probe choices

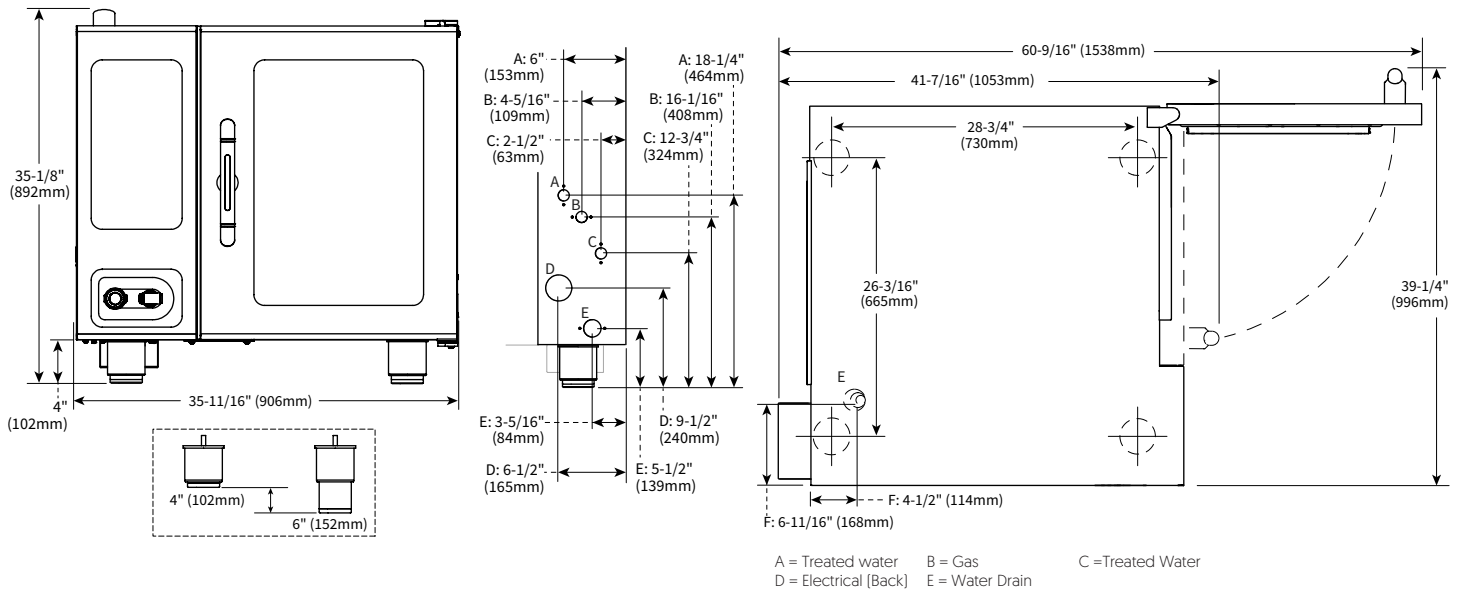
- Removable, single-point, quick-connect core temperature probe, optional
- Removable, single-point, quick-connect sous vide temperature probe, optional

### Security devices for correctional facility use

- Optional base package [not available with recessed door]: includes tamper-proof screw package, excludes temperature probe
- Anti-entrapment device, optional
- Control panel security cover, optional
- Hasp door lock [padlock not included], optional
- Removable, single-point, quick-connect core temperature probe, optional

# Combitherm® CTC7-20G

## Specification



### DIMENSIONS

**Model**  
CTC7-20G

**Exterior (H x W x D)**  
37-13/16" x 43-3/4" x 46-3/16" [961mm x 1111mm x 1173mm]  
**Exterior with recessed door (H x W x D)**  
37-13/16" x 48-3/4" x 46-3/16" [961mm x 1238mm x 1173mm]

**Interior (H x W x D)**  
23-1/4" x 24-1/4" x 32-3/4" [590mm x 616mm x 832mm]  
**Net Weight**  
680 lb [308 kg]

**Ship Dimensions (L x W x H)\***  
CTC7-20G 56" x 49" x 51" [1422mm x 1245mm x 1295mm]

**Ship Weight\***  
728 lb [330 kg]

\*Domestic ground shipping information. Contact factory for export weight and dimensions.



### CLEARANCE

Top: 20" [508mm]  
 Left: 0" [0mm]  
 18" [457mm] recommended service access  
 Right: 0" [0mm] Non-combustible surfaces  
 2" [51mm] combustible surfaces  
 Bottom: 5-1/8" [130mm]  
 Back: 4" [102mm]  
 4-5/16" [109mm] optional plumbing kit



### CHECK FIRST

- Oven must be installed level.
- Water supply shut-off valve and back-flow preventer when required by local code.
- Hood installation is required.
- Drain must not be located directly underneath the appliance.

# Combitherm® CTC7-20G



## Heat of rejection

CTC7-20G	Heat Gain qs, BTU/hr	Heat Gain qs, kW	Heat Gain qs, Mj/hr
	549	0.16	68.6



## Noise emissions

A maximum 67 dBA was measured at 3.3 ft [1 m] from unit as tested on CTP10-20E.



	CTC7-20G	V	Ph	Hz	Awg (mm <sup>2</sup> )	A	Breaker	kW	Connection
†	120V*	120	1	60	12 [3.31]	7.0	20	.84	L1, L2/N, G
†	208-240V	208	3	50/60	14 [2.08]	4.8	15	1.0	L1, L2, L3, G
		240	3	50/60	14 [2.08]	4.2	15	1.0	L1, L2, L3, G
	380-415V	380	3	50/60	14 [2.08]	4.6	15	1.0	L1, L2, L3, N, G
		415	3	50/60	14 [2.08]	4.2	15	1.0	L1, L2, L3, N, G

† Per UL requirements, must be permanently connected to electrical supply source.

\*Ground fault or residual current protection device must accommodate a leakage current of 20mA.

- Electrical connections must meet all applicable federal, state, and local codes.
- For use on individual branch circuit only.
- Ovens are not supplied with an electrical cord or plug.



## Water requirements (per oven)

- Two cold water inlets - drinking quality
- One treated water inlet: 3/4" NPT connection. Line pressure 30 psi minimum dynamic and 90 psi maximum static [200-600 kPa] at a minimum flow rate of 0.26 gpm [1 L/min].
- One untreated water inlet: 3/4" NPT connection. Line pressure 30 psi minimum dynamic and 90 psi maximum static [200-600 kPa] at a minimum flow rate of 2.64 gpm [10 L/min]. Water drain: 1-1/2" [40mm] connection with a vertical vent to extend above the exhaust vent. Materials must withstand temperatures up to 200°F [93°C].

## Water Quality Standards

It is the sole responsibility of the owner/operator/purchaser of this equipment to verify that the incoming water supply is comprehensively tested and, if required, a means of "water treatment" provided that would meet compliance requirements with the published water quality standards shown below. Non-compliance with these minimum standards will potentially damage this equipment and/or components and void the original equipment manufacturer's warranty. Alto-Shaam recommends using the Alto-Shaam Reverse Osmosis System to properly treat your water.

Inlet Water Requirements		
Contaminant	Treated Water	Untreated Water
Free Chlorine	Less than 0.1 ppm [mg/L]	Less than 0.1 ppm [mg/L]
Hardness	30-70 ppm	30-70 ppm
Chloride	Less than 30 ppm [mg/L]	Less than 30 ppm [mg/L]
pH	7.0 to 8.5	7.0 to 8.5
Silica	Less than 12 ppm [mg/L]	Less than 12 ppm [mg/L]
Total Dissolved Solids [tds]	50-125 ppm	50-360 ppm



## Clearance requirements for water filtration system

Do not install a water filtration system behind unit.

# Combitherm® CTC7-20G



**Gas Requirements (gas type must be specified on order)**  
**Hook-up: 3/4" NPT**

UL Marked Appliances	Maximum Input BTU/h	Minimum Input BTU/h	Maximum Inlet Pressure Inches WC	Minimum Inlet Pressure Inches WC	Maximum Fuel Consumption*	
					CFH	GPH
Natural Gas	85,000	65,000	14.0	5.5	81.0	N/A
Propane				9.0	34.0	0.9

\*Assumes an average heating value for natural gas to be 1050 BTU/SCF and a specific gravity of 0.60. The assumed value for propane gas is 2,500 BTU/SCF, and a specific gravity of 1.53.

AGA Marked Appliances	Maximum Input MJ/h	Minimum Input MJ/h	Maximum Inlet Pressure kPa	Minimum Inlet Pressure kPa	Maximum Fuel Consumption	
					m <sup>3</sup> /h	L/h
Natural Gas	89.7	68.6	3.48	1.13	2.4	N/A
Propane				2.75	0.9	3.5

CE Marked Appliances	Maximum Input		Minimum Input		Nominal Gas Pressure mbar	Maximum Gas Pressure mbar	Maximum Fuel Consumption m <sup>3</sup>
	kWh (Hs)	kWh (Hi)	kWh (Hs)	kWh (Hi)			
2E [G20]	25.0	22.5	20.0	18.0	20	50	2.4
2LL [G25]					20		2.8
3P [G31]	24.5	22.5	19.5	18.0	37		0.9
3B/P [G30]					29		0.9

Архангельск (8182)63-90-72  
 Астана (7172)727-132  
 Астрахань (8512)99-46-04  
 Барнаул (3852)73-04-60  
 Белгород (4722)40-23-64  
 Брянск (4832)59-03-52  
 Владивосток (423)249-28-31  
 Волгоград (844)278-03-48  
 Вологда (8172)26-41-59  
 Воронеж (473)204-51-73  
 Екатеринбург (343)384-55-89  
 Иваново (4932)77-34-06

Ижевск (3412)26-03-58  
 Иркутск (395)279-98-46  
 Казань (843)206-01-48  
 Калининград (4012)72-03-81  
 Калуга (4842)92-23-67  
 Кемерово (3842)65-04-62  
 Киров (8332)68-02-04  
 Краснодар (861)203-40-90  
 Красноярск (391)204-63-81  
 Курск (4712)77-13-04  
 Липецк (4742)52-20-81  
 Киргизия (996)312-96-26-47

Магнитогорск (3519)55-03-13  
 Москва (495)268-04-70  
 Мурманск (8152)59-64-93  
 Набережные Челны (8552)20-53-41  
 Нижний Новгород (831)429-08-12  
 Новокузнецк (3843)20-46-81  
 Новосибирск (383)227-86-73  
 Омск (3812)21-46-40  
 Орел (4862)44-53-42  
 Оренбург (3532)37-68-04  
 Пенза (8412)22-31-16  
 Казахстан (772)734-952-31

Пермь (342)205-81-47  
 Ростов-на-Дону (863)308-18-15  
 Рязань (4912)46-61-64  
 Самара (846)206-03-16  
 Санкт-Петербург (812)309-46-40  
 Саратов (845)249-38-78  
 Севастополь (8692)22-31-93  
 Симферополь (3652)67-13-56  
 Смоленск (4812)29-41-54  
 Сочи (862)225-72-31  
 Ставрополь (8652)20-65-13  
 Таджикистан (992)427-82-92-69

Сургут (3462)77-98-35  
 Тверь (4822)63-31-35  
 Томск (3822)98-41-53  
 Тула (4872)74-02-29  
 Тюмень (3452)66-21-18  
 Ульяновск (8422)24-23-59  
 Уфа (347)229-48-12  
 Хабаровск (4212)92-98-04  
 Челябинск (351)202-03-61  
 Череповец (8202)49-02-64  
 Ярославль (4852)69-52-93

<https://altoshaam.nt-rt.ru/> || [ama@nt-rt.ru](mailto:ama@nt-rt.ru)